



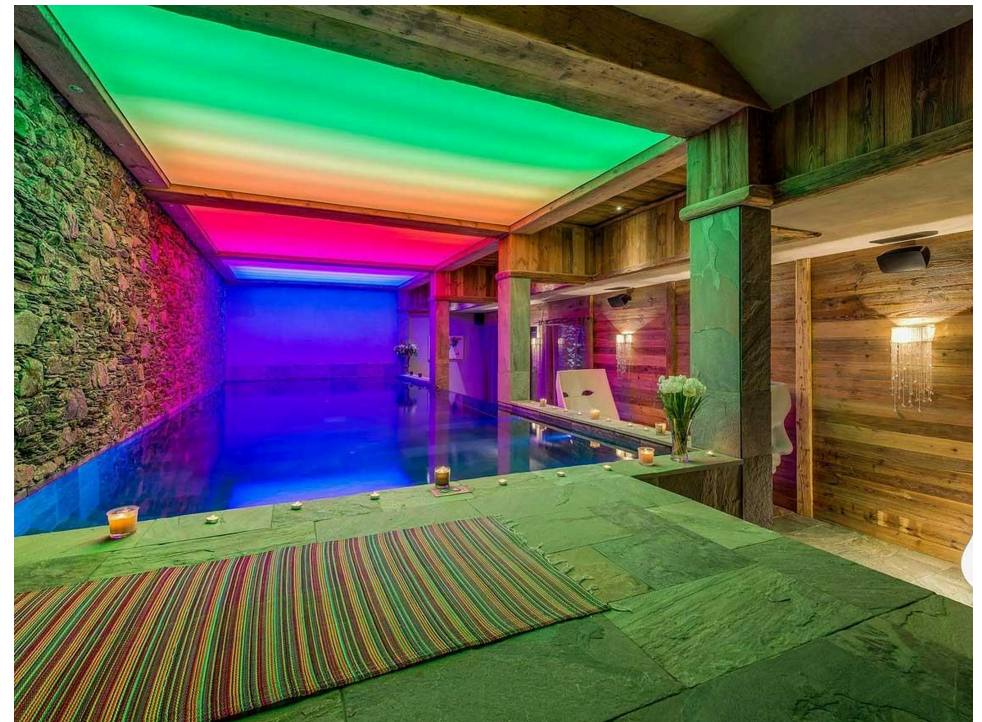
Bedrooms: 7  
Bathrooms: 7  
Capacity: 14  
Square: 611 M<sup>2</sup>

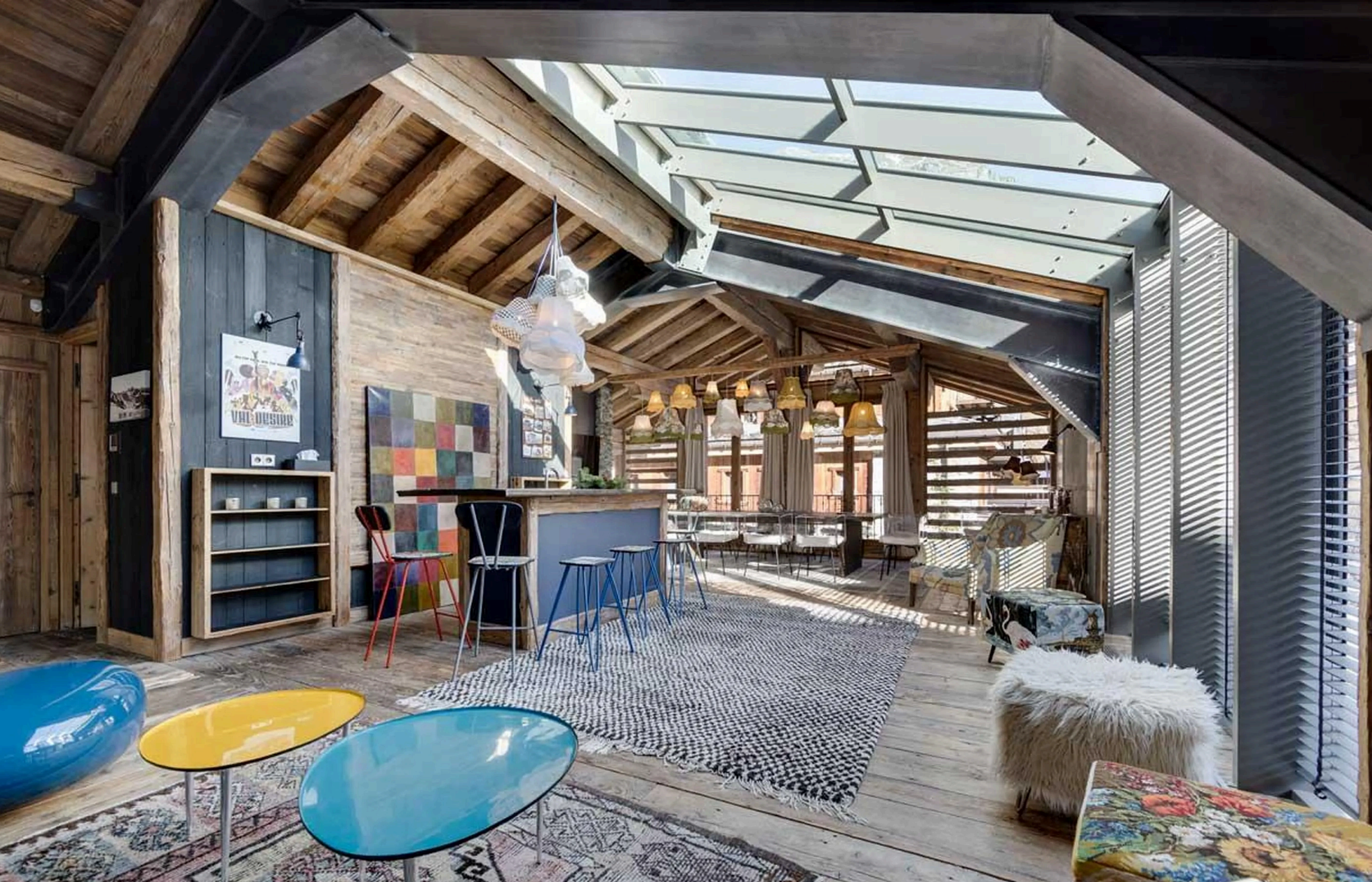
A TRIUMPH OF CONTEMPORARY ALPINE DESIGN, CHALET HUSKY CLAIMS A COVETED POSITION IN THE EXCLUSIVE PETIT ALASKA ENCLAVE. THIS 611 M<sup>2</sup> PROPERTY DISTINGUISHES ITSELF WITH AN EXTRAORDINARY ARRAY OF PRIVATE AMENITIES, INCLUDING A FULL-SIZE INDOOR CLIMBING WALL, AN ARCHERY AND RIFLE-SHOOTING AREA, AND A WORLD-CLASS SPA—SETTING A NEW STANDARD FOR DISCERNING GROUPS SEEKING BOTH ADVENTURE AND SERENITY.



## FACILITIES CHALET HUSKY

- . Pool
- . Sauna
- . Gym/Fitness
- . Pet Friendly
- . Terrace / Balcony
- . Panoramic view
- . Wi-Fi
- . Hot Tub
- . Hammam
- . Spa
- . Fireplace
- . Elevator
- . Garage/Parking
- . Ski Room





## A MASTERCLASS IN ENTERTAINMENT AND WELLNESS.



From a suspended glass walkway overlooking a tropical indoor garden to a lavish wellness floor with a waterfall pool, this chalet delivers an unrivaled collection of leisure spaces. The property unfolds across two floors, crowned by a breathtaking open-plan living area on the upper level. Here, a striking glass walkway—floating above a lush interior atrium—separates the intimate lounge from the elegant dining space. Gather around the stone fireplace or mix cocktails at the private bar before stepping onto the expansive terrace to absorb the mountain panorama.

Accommodating up to fourteen guests, the chalet features seven en-suite bedrooms. Six are located on the ground floor, including a distinguished master suite with a walk-in wardrobe and private access to the wellness area. Three bedrooms offer flexible twin or super-king configurations. The seventh bedroom enjoys direct terrace access on the first floor.

The spa level rivals a five-star hotel: dive into the 8x4-meter indoor swimming pool illuminated by chromatic mood lighting, complete with a waterfall feature. Unwind in the indoor jacuzzi, sauna, or hammam, then indulge in a bespoke treatment in the dedicated massage room. A well-appointed fitness room ensures you stay slope-ready.

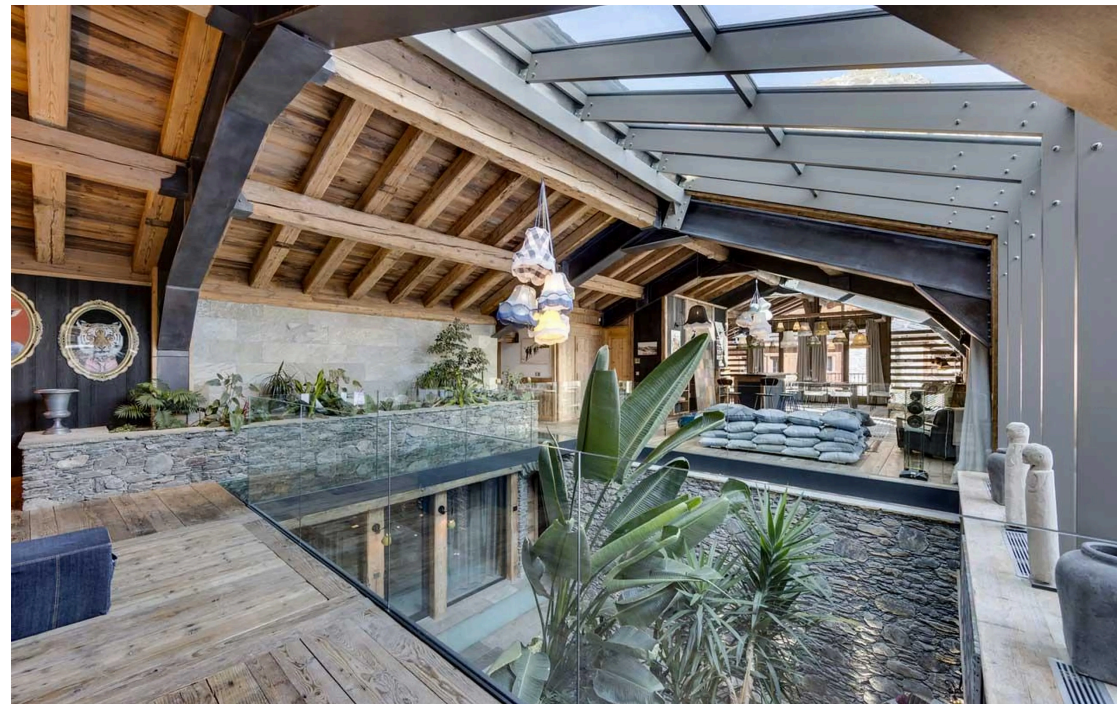
Beyond the traditional spa, the chalet reveals a corridor transformed into a bouldering room on an exposed rock face, alongside a dedicated zone for archery and rifle shooting—a distinctive advantage for families and groups seeking in-chalet excitement. Additional conveniences include an elevator linking both floors, a ski room with boot warmers, garage parking, and laundry facilities.



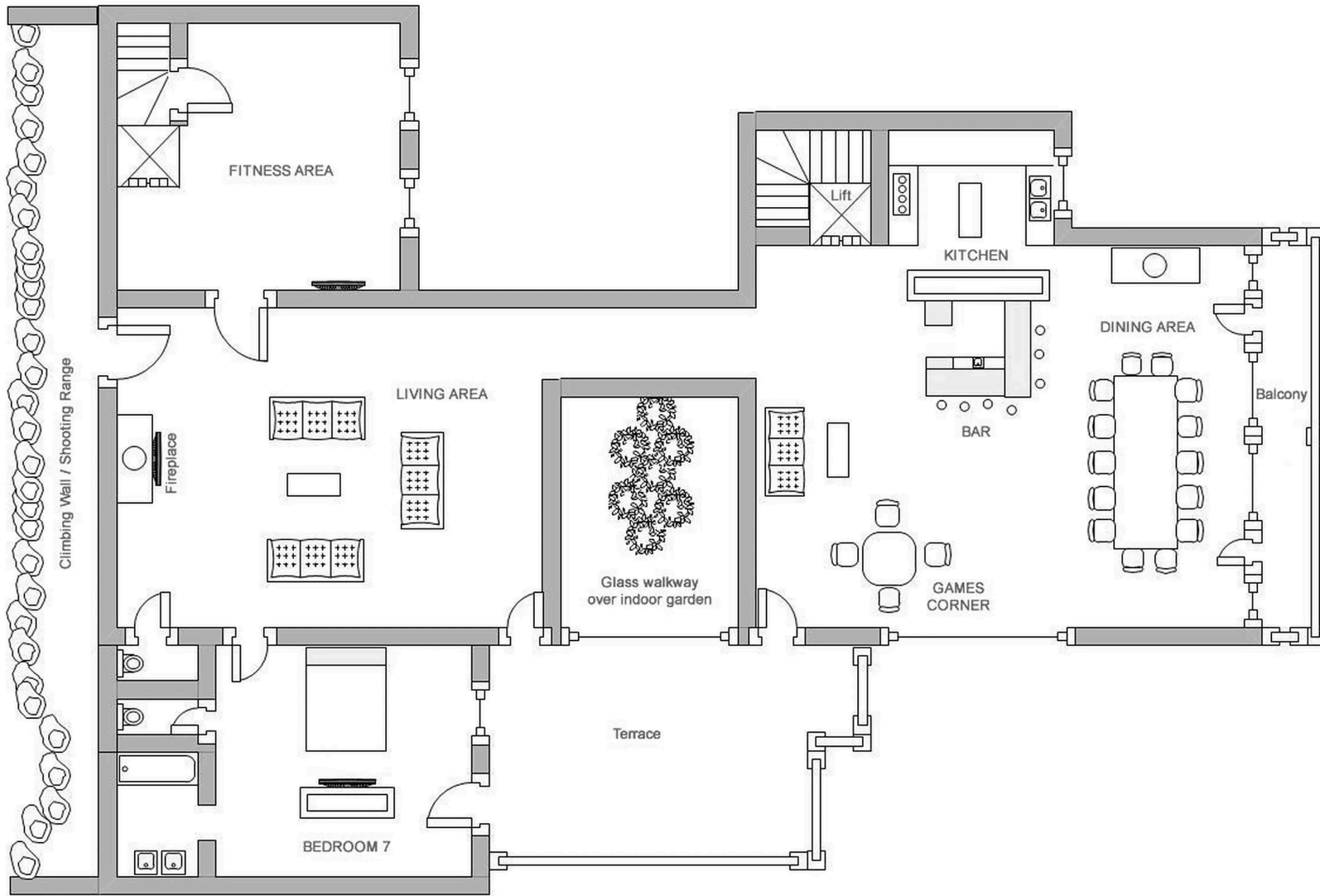


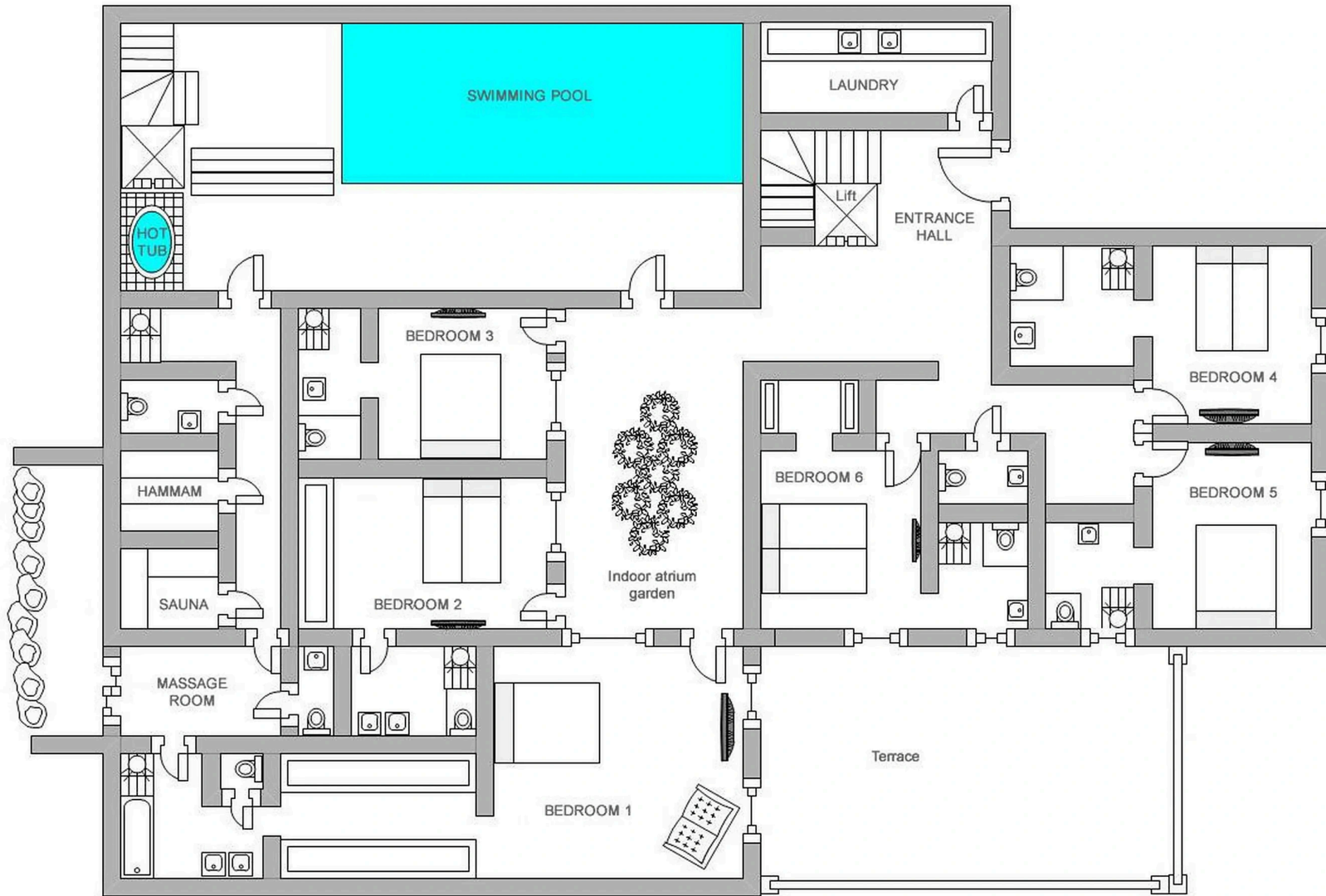








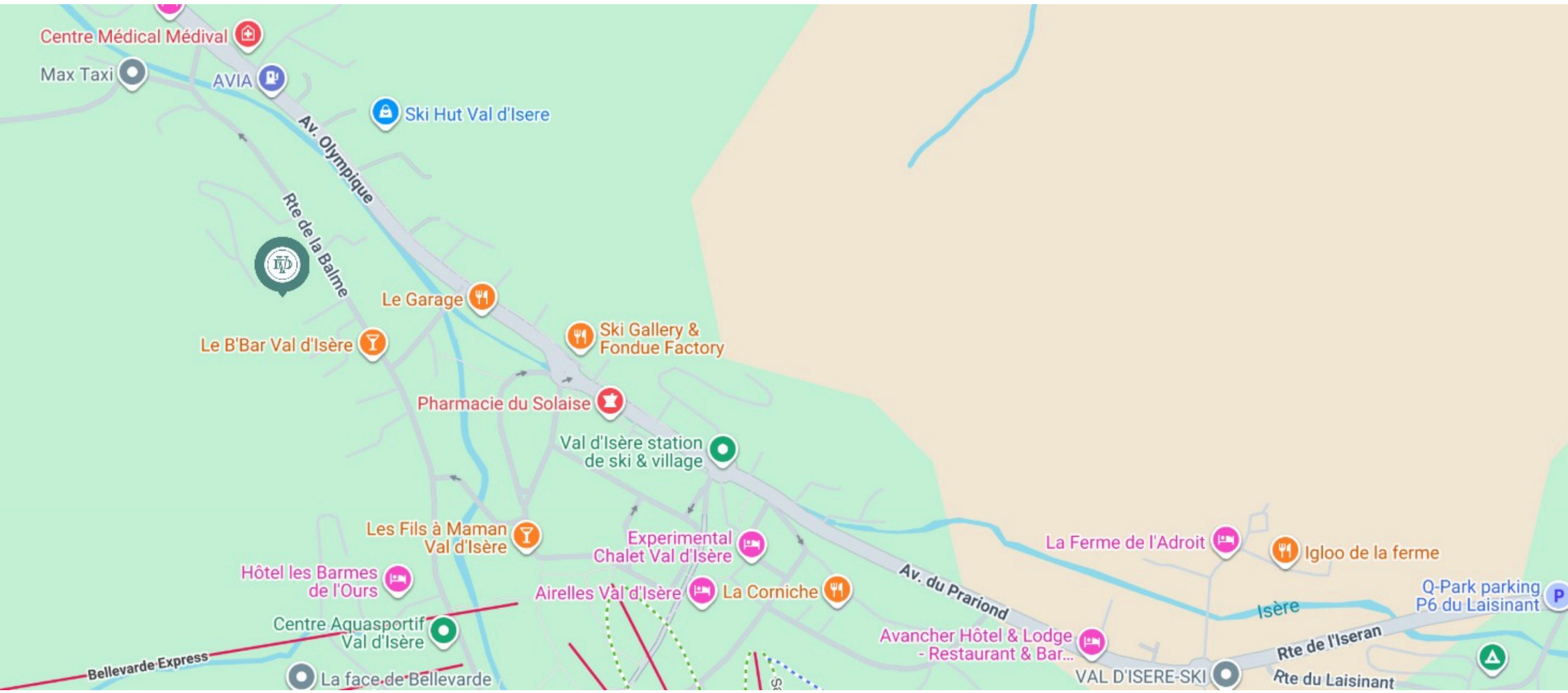




# PROPERTY LOCATION



Tucked away in the exclusive Petit Alaska area. The main snowfront and lift hub Bellevarde, Olympique, and Solaise are an 8-minute walk or 4-minute drive. La Daille is a 3-minute drive. Resort centre: 5–10 min stroll.





**DOLCE VILLA SAGL**

Viale Stefano Franscini 30, 6900 Lugano, Switzerland

---

✉ [info@mydolcevilla.com](mailto:info@mydolcevilla.com)

☎ +41 76 589 5428 VAT CHE-294.664.208